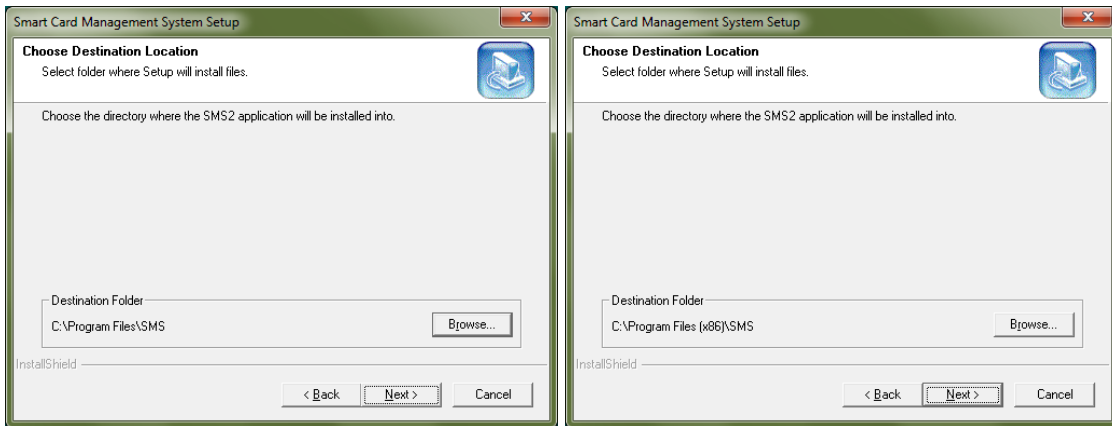


Creating EMV KIOSK Setup Cards in SMS2 for Contact Card Readers

The compressed file (4.02 Generic.Zip) you have just downloaded contains the necessary files to upgrade your version of SMS2 software. You will need to upgrade your software to setup your new Credit Kiosk unit. This version is not customer specific and can only be installed over an existing copy of SMS2.

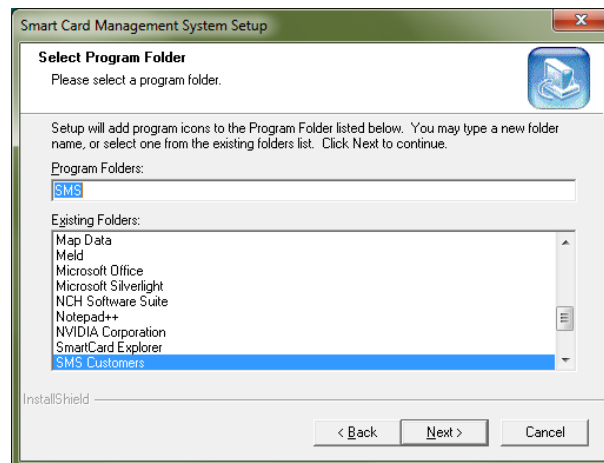
Part 1 – Installing the SMS2 Software 4.02

1. Extract the files from 4.02 Generic Zip file. If the files are extracted to a CD the CD will auto run when it is loaded in the computer otherwise you will have to run the “Setup” program manually by selecting the setup.exe file.
2. In the Choose Destination Location window the default location will be displayed. Depending on the version of Windows being used the default location will be either C:\Program Files\SMS or C:\Program Files(x86)\SMS (Fig. 1). If the location has been changed you will have to click the “Browse” button to find and select the location where SMS2 was installed.



(Fig 1)

3. After the directory has been chosen press the Enter key (or click on Next) and the screen below will be displayed. This is what will be displayed in the “Start” menu. (Fig. 2)



(Fig. 2)

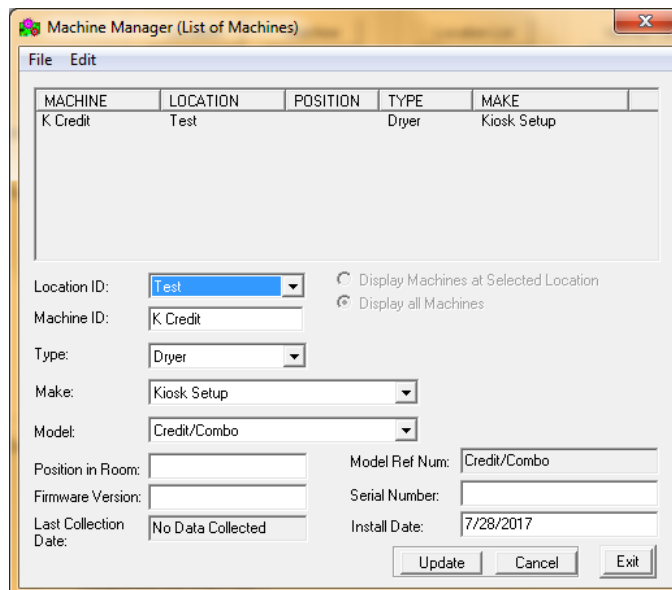
4. Press the Enter key (or click on Next) and the SMS2 software installation will begin.
5. When the installation is complete your SMS icon (Fig. 3) will open a newer version of SMS2 with the required files to setup your kiosk.



(Fig. 3)

Part 2 – Creating the Setup Card

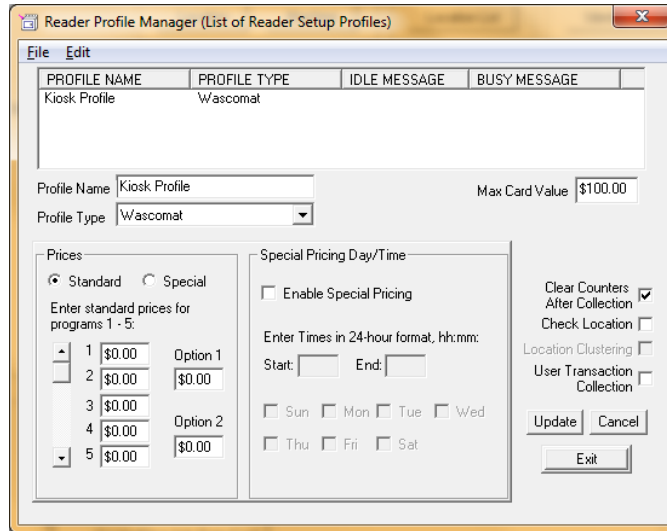
1. **Create a location.**
 - A. In the Machine Manager click on the button “Edit Location”.
 - B. In the screen that appears click on “Edit” (on top) and from the drop down list select “Add New Location”. Enter a Location ID (10 characters maximum).
 - C. Click on “Update” then click on “Exit”.
2. **Create a machine.**
 - A. In the Machine Manager click on the button “Edit Machine”.
 - B. In the screen that appears (Fig. 4) click on “Edit” (on top) and from the drop down list select “Add New Machine”.
 - C. Select a Location.
 - D. Enter a Machine ID (10 characters maximum).
 - E. Select “Dryer” as the Type, “Kiosk Setup” as the Make and “Credit/Combo” as the Model.
 - F. Click on “Update” then click on “Exit”.



(Fig. 4)

3. **Create a Profile.**

- A. In the Machine Manager click on the button “Reader Profile”.
- B. In the screen that appears (Fig. 5) click on “Edit” (on top) and from the drop down list select “Add New Profile”.
- C. Change the “Profile Type” to Wascomat.
- D. Click on “Update” then click on “Exit”.

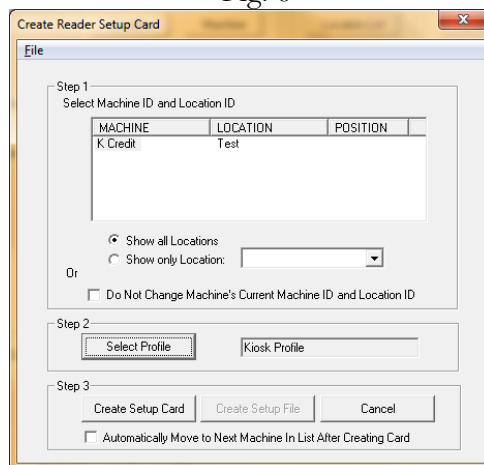


(Fig. 5)

4. **Create the Setup Card.**

- A. In the Machine Manager click on the button “Create Setup Card”.
- B. In the screen that appears (Fig. 6) select a “Machine ID” and “Location ID” by clicking on the “Machine ID”.
- C. Click on the button “Select Profile” and select the profile you just created. Then click on the button “Select”.
- D. Click on the button, ‘Create Setup Card’ and your card will be created.

Fig. 6



- 5. Insert your “Setup Card” into the Kiosk card reader.