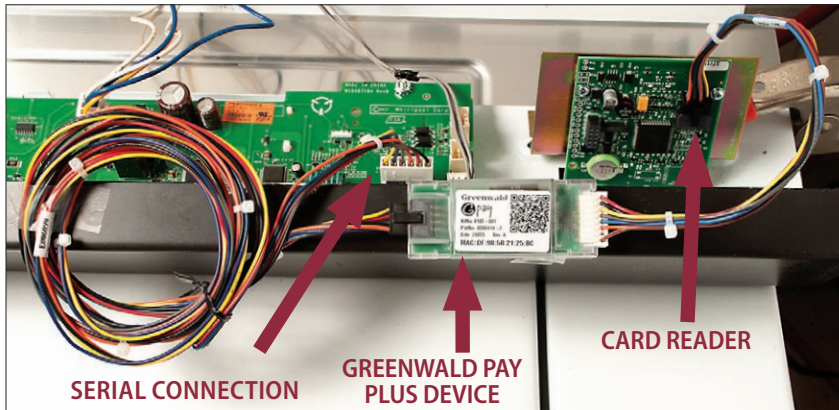


INSTALLATION DIAGRAM

The Greenwald Pay Plus device installs between the machine control board and the card reader



Greenwald Pay Plus
Installation Instructions
Maytag/Whirlpool

Kit # 4103-001

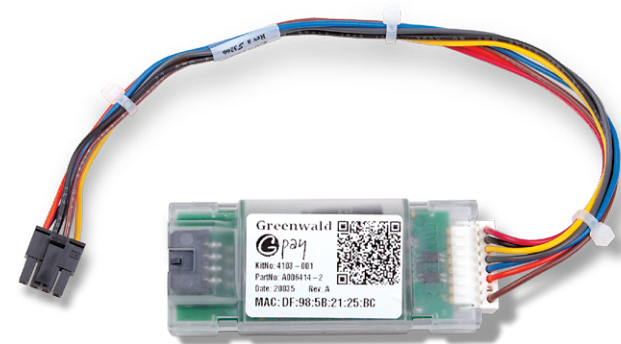
INS. 2478-1 Rev A

GREENWALD PAY PLUS DEVICE LED CODES

| COLOR | ACTIVITY | SIGNIFICANCE |
|------------|-------------|-------------------------------|
| Off | Off | Device not connected to power |
| White | Slow Blink | Device not configured |
| Blue | Steady | Selected during configuration |
| Yellow | Slow Blink | Loading machine configuration |
| Green | Steady | Configured & ready |
| Blue | Slow Blink | Active with phone app |
| Green | Fast Blink | Active, Start not pressed |
| Green | Slow Blink | Busy, machine running |
| Red | Slow Blink | Machine Error |
| Red | Fast Blink | Machine Interface Error |
| Blue/Green | Slow Toggle | Firmware Loading |
| Red | Steady | Firmware Error |

MACHINE ERROR CODES

| ERROR CODE | SIGNIFICANCE | RESOLUTION |
|-------------|-----------------------------------|--|
| d9 | Voltage below 90Vac for 8 seconds | Power down, power up and try again |
| d16 | Communications not received | Check connections |
| F#, E#, F## | System error code | Press START/PAUSE once to clear the code, then press START/PAUSE again to restart washer |



Tools Needed for Installation



- Greenwald Pay machine labels
- Appropriate tool to open machine panel
- Smart phone

Greenwald Industries

212 Middlesex Avenue | Chester, CT 06412 USA
800-221-0982 | www.greenwaldindustries.com

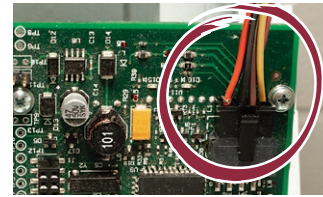


1

IMPORTANT: For seamless installation, set-up room and machine profiles in Greenwald Management System (GMS) prior to device installation.

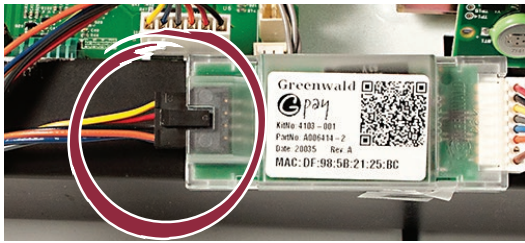
2

Disconnect power to machine.
Open console panel on machine.
Disconnect the plug from the card reader.



3

Connect the cable from the card reader into the Greenwald Pay Plus device.



4

Plug the Greenwald Pay Plus device into the card reader. The Greenwald Pay Plus device is now installed in-between the card reader and the control board.



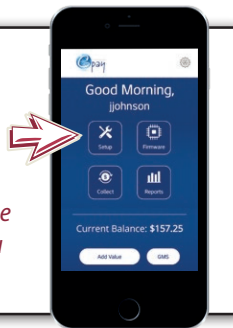
5

Leave console panel open and re-power the machine. After initialization, the Greenwald Pay Plus device will slow blink white indicating device not configured and is ready to be paired with the profiles set up in GMS.

6

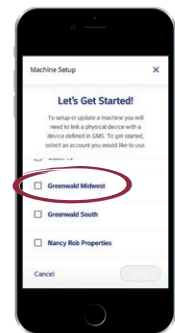
Configure Machines
Login to the Greenwald Pay app using your admin credentials > Select "Setup".

Note: Machine Profiles must be configured in GMS, before you can pair the machines.



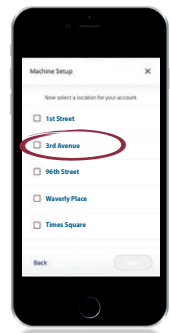
7

Select your account



8

Select your location



9

Choose machines to pair



10



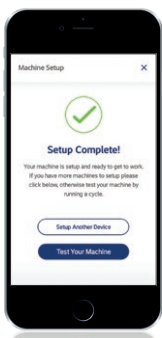
Label each washer and dryer with machine number labels as you configure each machine.



Note: MAC address on device and in app must match for machines to be paired correctly.

11

Repeat for each machine



12

Close all machine console panels and the install is complete.
Call Greenwald Customer Service for additional help 800-221-0982