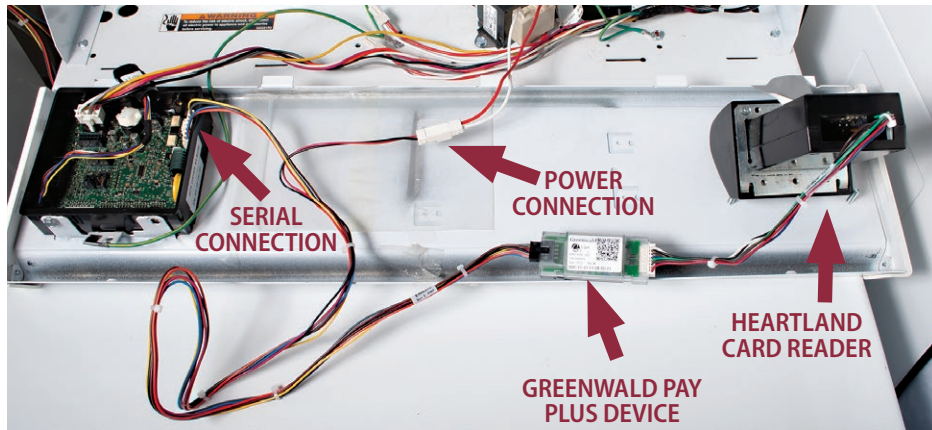


## INSTALLATION DIAGRAM

The Greenwald Pay Plus device installs in-between the machine control panel and Heartland card reader



## GREENWALD PAY PLUS DEVICE LED CODES

COLOR	ACTIVITY	SIGNIFICANCE
Off	Off	Device not connected to power
White	Slow Blink	Device not configured
Blue	Steady	Selected during configuration
Yellow	Slow Blink	Loading machine configuration
Green	Steady	Configured & ready
Blue	Slow Blink	Active with phone app
Green	Fast Blink	Active, Start not pressed
Green	Slow Blink	Busy, machine running
Red	Slow Blink	Machine Error
Red	Fast Blink	Machine Interface Error
Blue/Green	Slow Toggle	Firmware Loading
Red	Steady	Firmware Error

## MACHINE ERROR CODES

ERROR CODE	SIGNIFICANCE	RESOLUTION
EC18 + EC19	No communication between reader and control board	Check all wiring Check for proper setup (take note of Gpay LED colors)
EC11	Initialization error	Power down, power up and try again.
EC1A	Payment System initialization on Front End Control only system (aka 2019 setup on 2020 controller)	Change GMS machine configuration
EC05	Invalid data from reader	Check for correct machine type. Ensure the value in at least one of the programming options is not invalid and/or out of range.

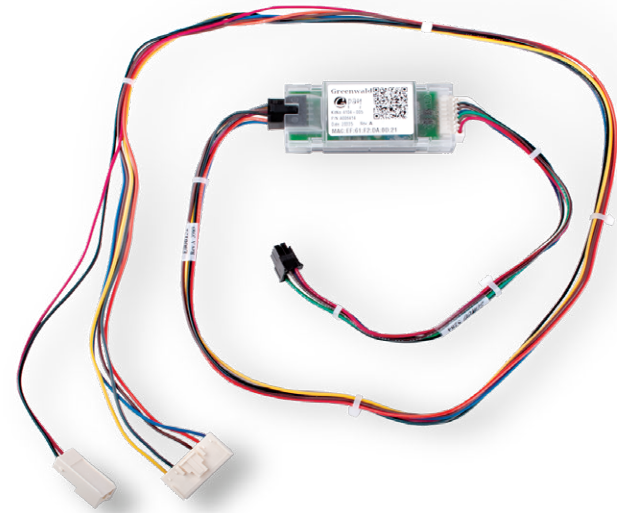


## Greenwald Pay Plus Installation Instructions

ACA Machines with HEARTLAND Card Readers

**Kit #: 4104-005-3**

INS. 2471-3 Rev B



## Tools Needed for Installation



- Greenwald Pay machine labels
- Appropriate tool to open machine panel
- Smart phone

## Greenwald Industries

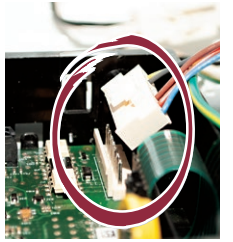
212 Middlesex Avenue | Chester, CT 06412 USA  
800-221-0982 | [www.greenwaldindustries.com](http://www.greenwaldindustries.com)



**1** **IMPORTANT:** For seamless installation, set-up room and machine profiles in Greenwald Management System (GMS) prior to device installation.  
*Note: GMS profiles should match Heartland profiles. Check included instructions "INS.2486" prior to Greenwald Pay device installation to determine if you have a Quantum Gold Pro Machine. Serial Payment System must be enabled on specified machines.*

**2** **Disconnect power to machine.**  
 Open console panel on machine.  
 Disconnect the entire Heartland wire harness and **discard**.

**3** Plug in the serial communications connector from the Greenwald Pay Plus device into the machine control board.



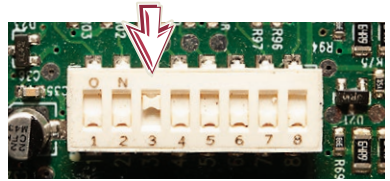
**4** Connect the power cable.



**5** Plug in Greenwald Pay Plus harness to Heartland card reader. The Greenwald Pay Plus device will now be connected between the control board and the Heartland reader.

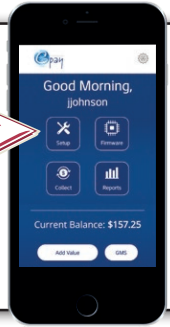


**6** If you have a Quantum God Pro Machine (as determined in Step 1) Skip this step.  
 Ensure dip switch #3 is turned on. Leave all other switches in their original positions (**change switch position only with power off**).



**7** Leave console panel open and re-power the machine. After initialization, the Greenwald Pay Plus device will slow blink white indicating device not configured and is ready to be paired with the profiles set up in GMS.

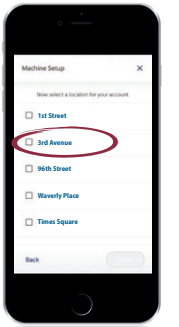
**8** **Configure Machines**  
 Login to the Greenwald Pay app using your admin credentials > Select "Setup"  
*Note: Machine Profiles must be configured in GMS, before you can pair the machines*



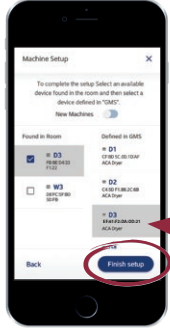
**9** Select your account



**10** Select your location



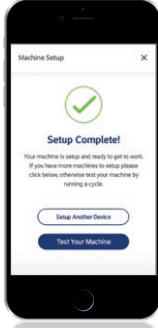
**11** Choose machines to pair



**12** Label each washer and dryer with machine number labels as you configure each machine  
*Note: MAC address on device and in app must match for machines to be paired correctly.*



**13** Repeat for each machine



**14** Close all machine console panels and the install is complete.  
 Call Greenwald Customer Service for additional help 800-221-0982