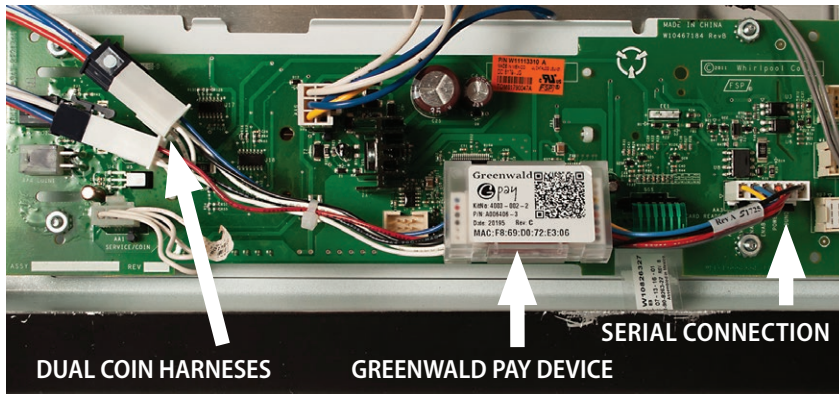


INSTALLATION DIAGRAM

The Greenwald Pay device installs between the machine control board and the dual coin drop



GREENWALD PAY DEVICE LED CODES

COLOR	ACTIVITY	SIGNIFICANCE
Off	Off	Device not connected to power
White	Slow Blink	Device not configured
Blue	Steady	Selected during configuration
Yellow	Slow Blink	Loading machine configuration
Green	Steady	Configured & ready
Blue	Slow Blink	Active with phone app
Green	Fast Blink	Active, Start not pressed
Green	Slow Blink	Busy, machine running
Red	Slow Blink	Machine Error
Red	Fast Blink	Machine Interface Error
Blue/Green	Slow Toggle	Firmware Loading
Red	Steady	Firmware Error

MACHINE ERROR CODES

ERROR CODE	SIGNIFICANCE	RESOLUTION
d5 & d13	Blocked coin slots	Check slots for coins or debris
d9	Voltage below 90Vac for 8 seconds	Power down, power up and try again
d16	Communications not received	Check connections
F#, E#, F##	System error code	Press START/PAUSE once to clear the code, then press START/PAUSE again to restart washer

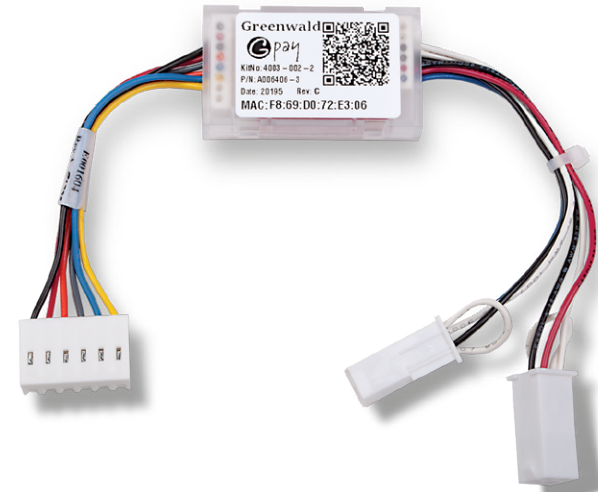
EN21-047



Greenwald Pay Installation Instructions Maytag/Whirlpool for Dual Coin

Kit # 4003-002-2

INS. 2475-5 Rev B



Tools Needed for Installation



- Greenwald Pay machine labels
- Appropriate tool to open machine panel
- Smart phone



Greenwald Industries

212 Middlesex Avenue | Chester, CT 06412 USA
800-221-0982 | www.greenwaldindustries.com



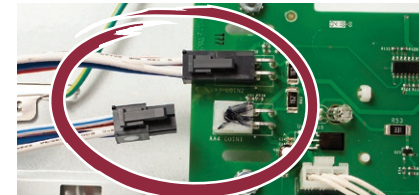
1

IMPORTANT: For seamless installation, set-up room and machine profiles in Greenwald Management System (GMS) prior to device installation.

2

Disconnect power to machine.

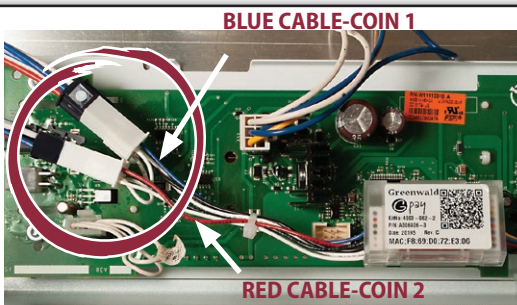
Open console panel on machine.
Disconnect the two coin harnesses from the control board "COIN1" & "COIN2".



3

Plug in the connector from "coin 1" to the connector from the Greenwald Pay device with the blue cable. Plug in the connector from "coin 2" to the connector from the Greenwald Pay device with the red cable.

Note: Both cables must be plugged in.



4

Plug in the serial communication connector on the Greenwald Pay device into the machine control board. "AA3" The Greenwald Pay device is now installed in-between the coin drop and the control board.



5

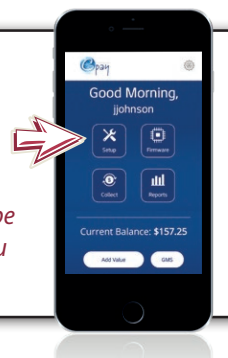
Leave console panel open and re-power the machine. After initialization, the Greenwald Pay device will slow blink white indicating device not configured and is ready to be paired with the profiles set up in GMS.

6

Configure Machines

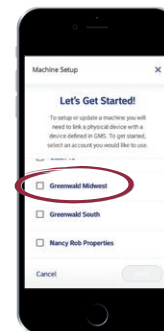
Login to the Greenwald Pay app using your admin credentials > Select "Setup".

Note: Machine Profiles must be configured in GMS, before you can pair the machines.



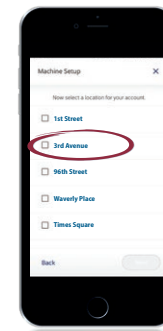
7

Select your account



8

Select your location



9

Choose machines to pair



10



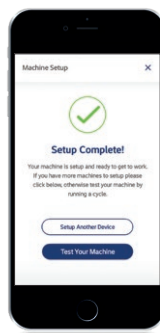
Label each washer and dryer with machine number labels as you configure each machine.



Note: MAC address on device and in app must match for machines to be paired correctly.

11

Repeat for each machine



12

Close all machine console panels and the install is complete.

Call Greenwald Customer Service for additional help 800-221-0982