

WARNING!

Card Reader kit components are static-sensitive devices. Please observe proper grounding procedures before handling!

Electrostatic Discharge (ESD) problems are present everywhere. ESD may damage or weaken the electronic control assembly. The new control assembly may appear to work well after repair is finished, but failure may occur at a later date due to ESD stress.

- Do not remove the reader assembly and the machine interface board with power supply from its original package until you are ready to install it.
 - Before handling the reader assembly and the machine interface board with power supply, ground yourself by grasping an unpainted portion of the system's metal chassis.
 - Frequently ground yourself to discharge any static electric charge that may build up in your body while working on installation and / or configuration.
 - Use an anti-static wrist strap. Connect wrist strap to green ground connection point or unpainted metal in the appliance
- OR-
- Touch your finger repeatedly to a green ground connection point or unpainted metal in the appliance. (ie: Metal screw on outside of chassis.)
 - Before removing the part from its package, touch the bag to a green ground connection point or unpainted metal in the appliance.
 - Avoid touching electronic parts or terminal contacts; handle electronic control assembly by edges only.
 - When repackaging failed electronic control assembly in bag, observe above instructions.

ADMIN - MULTIPAY DEVICE LED CODES

COLOR	ACTIVITY	SIGNIFICANCE
Off	Off	Device not connected to power
White	Slow Blink	Device not configured
Blue	Steady	Selected during configuration
Yellow	Slow Blink	Loading machine configuration
Green	Steady	Configured & ready
Blue	Slow Blink	Active with phone app
Green	Fast Blink	Active, Start not pressed
Green	Slow Blink	Busy, machine running
Red	Slow Blink	Machine Error
Red	Fast Blink	Machine Interface Error
Blue/Green	Slow Toggle	Firmware Loading
Red	Steady	Firmware Error

USER - MULTIPAY DEVICE LED CODES

COLOR	ACTIVITY	SIGNIFICANCE
Off	Off	Waiting for card to be presented
Green	Slow Blink	Card presented with funds
Yellow	Slow Blink	Card presented with insufficient funds
Yellow	Slow Blink	Loading machine configuration
Blue/Green	Slow Toggle	Requesting card to be presented for update/vend
Red	Steady	Card is admin or setup, not user card
Red	Slow Blink	Card corrupted or has bad data

EN1-110



MultiPay Machine Reader Installation Instructions Alliance Machines

INS. 2487-1 Rev B



Contents of Package:

Numbers in () denotes Stack machines

- 1(2) – MPAY RDR ASS'Y
- 2(4) – #6-32 KEPS NUT
- 1(1) – INSTALLATION INSTRUCTIONS
- 1(2) – COVER/MOUNTING PLATE
- 1(2) – INTERFACE CABLE
- 2(4) – #6 5/8 OD FENDER WASHER
- 1(2) – MONEY BOX COVER PLATE

Tools Needed for Installation:

- MultiPay machine ID labels
- Appropriate tool to open machine panel
- 5/16" nut driver



Other Requirements:

- This kit may require a transformer and cable harness available from your Speed Queen Dealer to be installed.

Greenwald Industries

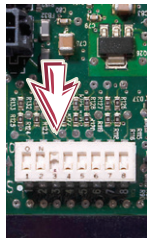
212 Middlesex Avenue | Chester, CT 06412 USA
800-221-0982 | www.greenwaldindustries.com



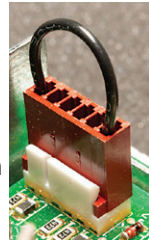
1 FOLLOW ALL WARNINGS MESSAGES PRINTED ON BACK PAGE OF THESE INSTRUCTIONS
IMPORTANT: For seamless installation, set-up room and machine profiles in Greenwald Management System (GMS) prior to device installation.

2 **DISCONNECT POWER TO MACHINE.**
 Unlock and open the service panels of your machine.

3 Ensure DIP Switch #3 (the third switch) is in the ON position.
(change switch position only with power off).



OR
 Ensure serial (purse) jumper is plugged in.
 (MDC/Quantum machines)

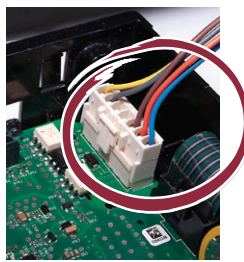


OR
 Follow instructions to "Enable Serial Payment for Alliance Quantum Gold Pro Machines" From the Greenwald website:

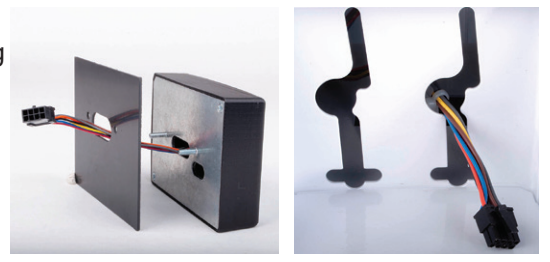


*****Note: Images shown may not reflect your exact machine model.*****

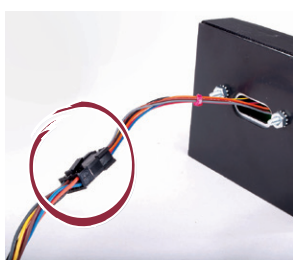
4 Connect the 7-pin connector from the Interface cable and plug it into the H3 connector on the control board.



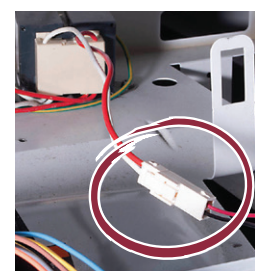
5 Take the MultiPay reader and insert the cable and two PEM studs through the opening of the cover/mounting plate and then through the coin drop opening, securing the MultiPay reader to the machine with the two #6-32 keys nuts and washers supplied.
Note the MAC address of the reader before bolting reader onto machine. MAC address is use to configure machines in steps 9-13.



6 Connect the 8-pin connector to the 8-pin connector of the MultiPay reader.



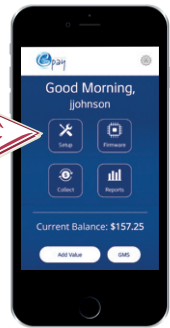
7 Plug the two pin power connector into the two pin connector on the transformer.



8 Close the service panels.
 Place the optional cover plate, into the money box opening and apply pressure until the tabs snap into place.
 Re-connect power to the machine.



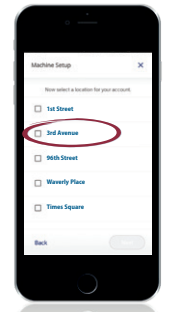
9 **Configure Machines**
 Login to the Greenwald Pay app using your admin credentials > Select "Setup"
Note: Machine Profiles must be configured in GMS, before you can pair the machines



10 **Select your account**



11 **Select your location**



12 **Choose machines to pair**
Note: MAC address on device and in app must match



13 Label each washer and dryer with machine number labels as you configure each machine. Repeat until all machines are paired.

