



EMV Credit Kiosk User Manual



EVO Terminal Configuration

1) Ensure Terminal is Online: Indicated by message "POS Online" on terminal screen.

2) Have TPN Number Ready: To configure your EVO terminal, you will need to manually enter the TPN number provided by EVO. Below is an example of the information you will receive directly from EVO via email.

DBA: Greenwald Industries	
Location Name: 212 Middlesex Ave	
MID:	236598045231
UPS Tracking #:	N/A
TPN:	562784390
Device S/N:	N/A
Auth Key:	hzR7Jqy5c
Register ID:	4379

3) Set Terminal to Utility Mode:

- Press the Green OK Button on the terminal.
- Enter the **Manager Password ("1234")**
- Select UTILITY.
- OR enter Maintenance Mode by rebooting the terminal and hitting the Yellow backspace key when the screen says Core with moving dots. A prompt will ask for the Maintenance Password (**Default is 6239**). This will take you to Core Menu, and the Screen will be Green in color.

3) Download Dejavoo Z Series:

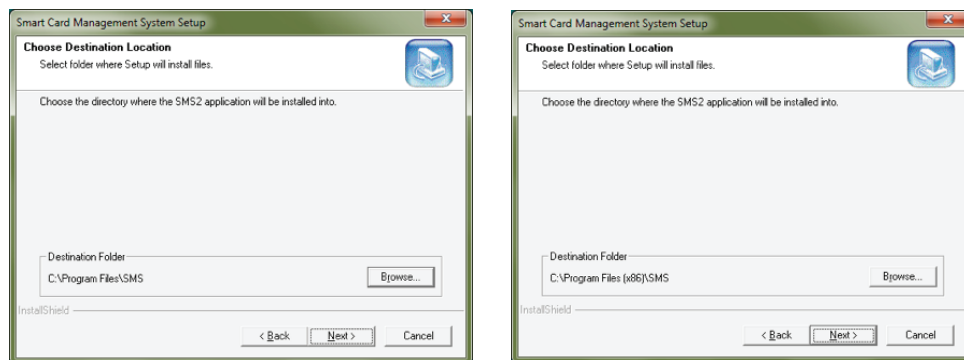
- Select SOFTWARE DOWNLOAD.
- Select CONNECT
- Select ETHERNET
- Select FULL
- Enter the TPN - Please note that you will need to pause between identical numbers, otherwise an alpha character will populate if you press the same key too quickly. For example, pressing "1" in rapid succession will produce a "Q" rather than "11". After entering the TPN, press the green OK button.
- The terminal should connect and display a download progress bar. Once the download is complete, the screen will display "APPLY UPDATES". Select "YES".

Creating EMV KIOSK Setup Cards in SMS2 for Contact Card Readers

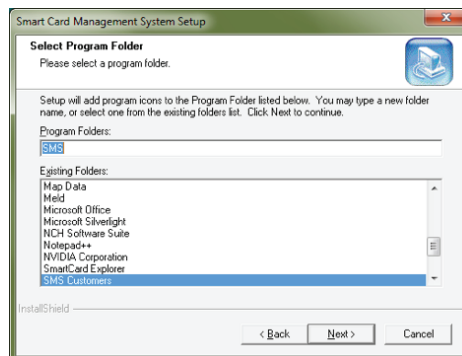
Download [SMS2 Upgrade Version 4.02](#) to upgrade your version of SMS2 software. You will need to upgrade your software to setup your new Credit Kiosk unit. This version is not customer specific and can only be installed over an existing copy of SMS2.

Part 1 - Installing the SMS2 Software 4.02

- 1) Extract the files from 4.02 Generic Zip file. If the files are extracted to a CD the CD will auto run when it is loaded in the computer otherwise you will have to run the "Setup" program manually by selecting the setup.exe file.
- 2) In the Choose Destination Location window the default location will be displayed. Depending on the version of Windows being used the default location will be either C:\Program Files\SMS or C:\Program Files(x86)\SMS. If the location has been changed you will have to click the "Browse" button to find and select the location where SMS2 was installed.



- 3) After the directory has been chosen press the Enter key (or click on Next) and the screen below will be displayed. This is what will be displayed in the "Start" menu.



- 4) Press the Enter key (or click on Next) and the SMS2 software installation will begin.
- 5) When the installation is complete the SMS icon (below) will open a newer version of SMS2 with the required files to setup your kiosk.



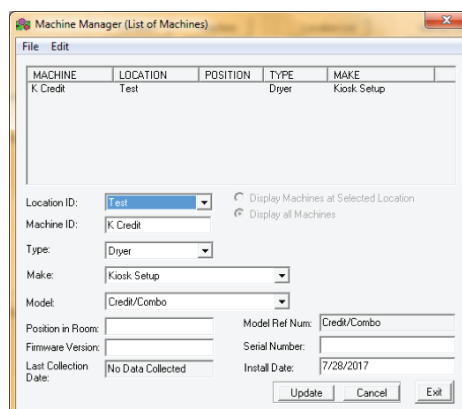
Part 2 - Creating the Set-Up Card

1) Create a Location

- A. In the Machine Manager click on the button "Edit Location".
- B. In the screen that appears click on "Edit" (on top) and from the drop down list select "Add New Location". Enter a Location ID (10 characters maximum).
- C. Click on "Update" then click on "Exit".

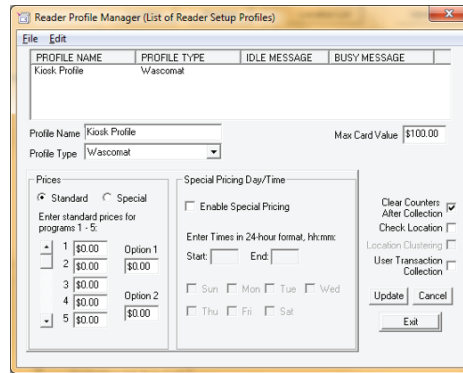
2) Create a Machine

- A. In the Machine Manager click on the button "Edit Machine".
- B. In the screen that appears (see image below) click on "Edit" (on top) and from the drop down list select "Add New Machine".
- C. Select a Location.
- D. Enter a Machine ID (10 characters maximum).
- E. Select "Dryer" as the Type, "Kiosk Setup" as the Make and "Credit/Combo" as the Model.
- F. Click on "Update" then click on "Exit".



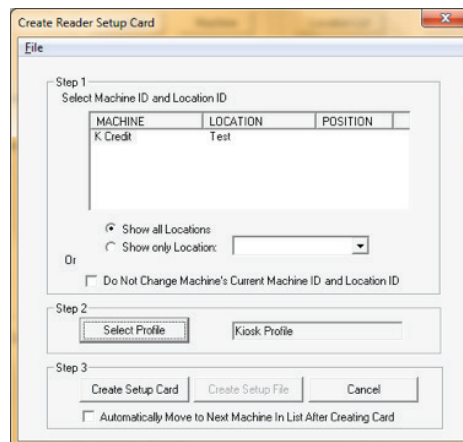
3) Create a Profile

- A. In the Machine Manager click on the button "Reader Profile".
- B. In the screen that appears click on "Edit" (on top) and from the drop down list select "Add New Profile".
- C. Change the "Profile Type" to Wascomat.
- D. Click on "Update" then click on "Exit".



4) Create the Set-Up Card

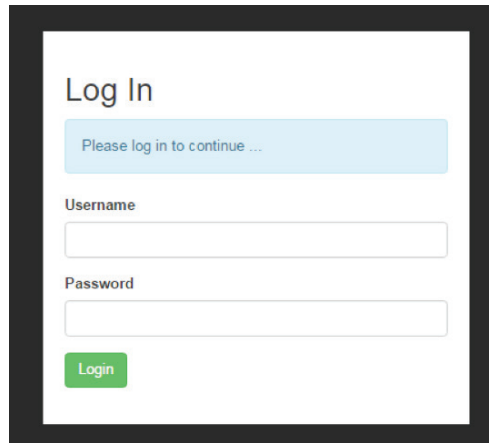
- A. In the Machine Manager click on the button "Create Setup Card".
- B. In the screen that appears select a "Machine ID" and "Location ID" by clicking on the "Machine ID".
- C. Click on the button "Select Profile" and select the profile you just created. Then click on the button "Select".
- D. Click on the button, "Create Setup Card" and your card will be created.



5) Insert your Set-Up Card into the Kiosk Card Reader

GMS Set-Up

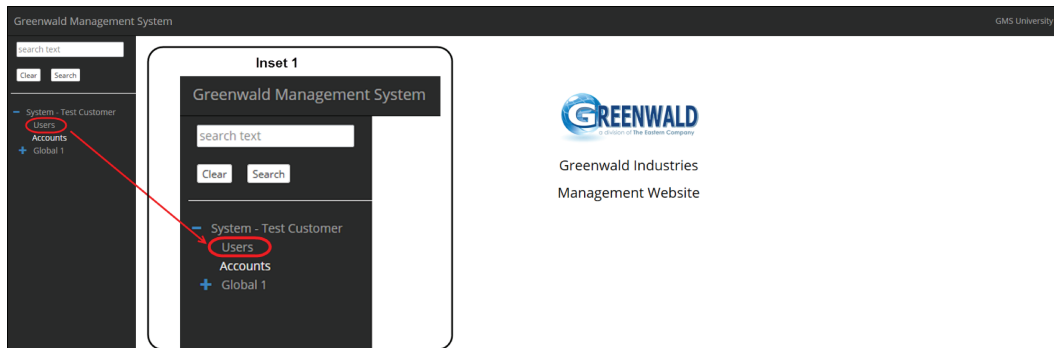
1) LOG IN to Greenwald Management System, <http://gms.gi-web.net/login>, using Google Chrome, Firefox or Microsoft Edge browser, with your SMS-3000 or FlashCash Online login credentials. If you do not have login credentials contact Greenwald Industries.



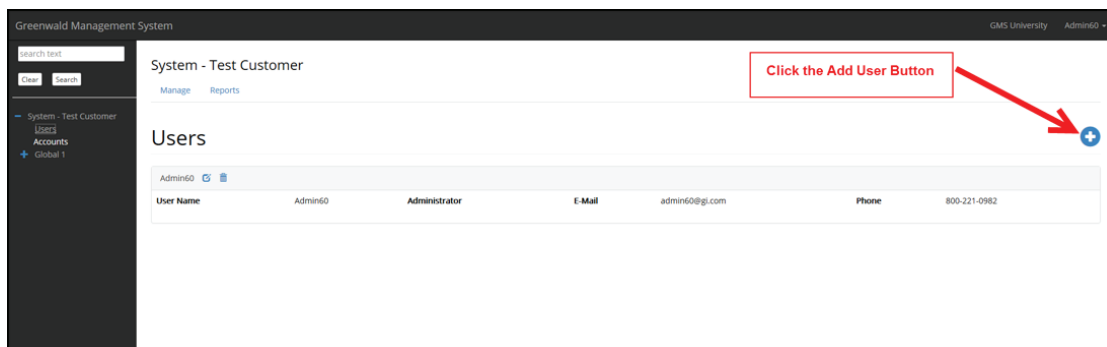
The screenshot shows a 'Log In' form with a light blue header bar containing the text 'Please log in to continue ...'. Below this are two input fields: 'Username' and 'Password'. At the bottom of the form is a green 'Login' button.

2) ADD A NEW USER

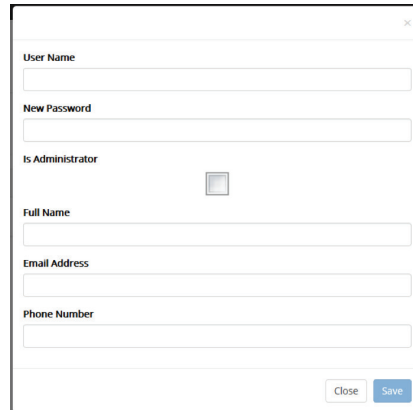
› Select **Users** from Menu on Left



› Click the Add button



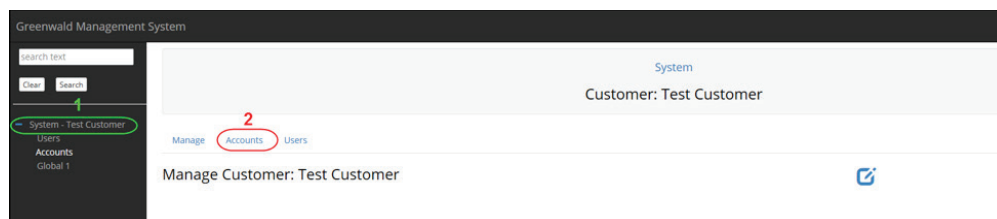
➤ Enter User Information into the fields provided. Check Administrator only if the user will have administrator rights. When finished, click the Save button. **Please note that once a user has been saved a new password can only be provided by deleting the user and re-entering with new password.*



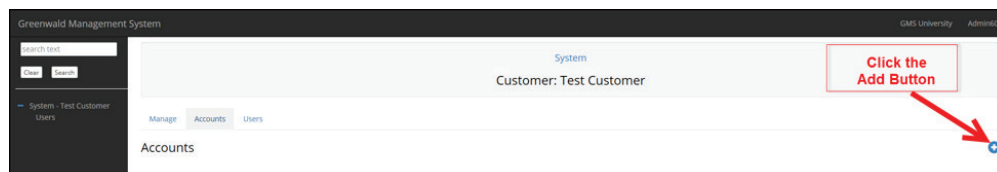
A form titled 'User Information' with the following fields: User Name, New Password, Is Administrator (checkbox), Full Name, Email Address, and Phone Number. At the bottom right are 'Close' and 'Save' buttons.

3) ADD AN ACCOUNT

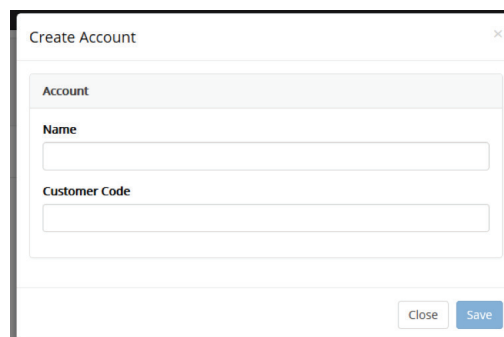
➤ Click **System** and select **Accounts**



➤ Click the Add button.



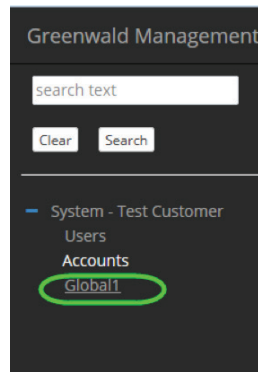
➤ Enter Account Name and Four Character Customer Code provided by Greenwald Industries. Example FFZZ. Select Save.



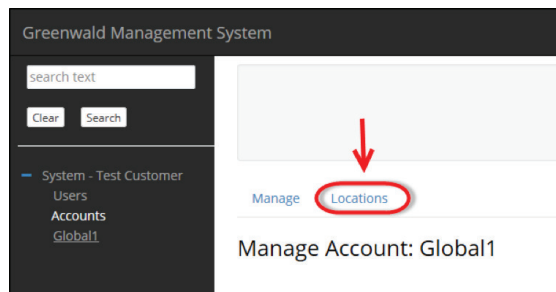
A form titled 'Create Account' with the following fields: Account Name, Customer Code, and a 'Save' button. At the bottom right are 'Close' and 'Save' buttons.

4) ADD A LOCATION

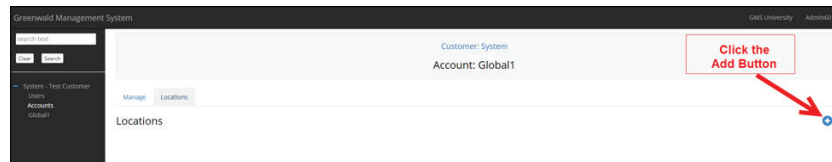
- › Click the Account the location is to be added to.



- › Click **Locations**



- › Click the Add button.

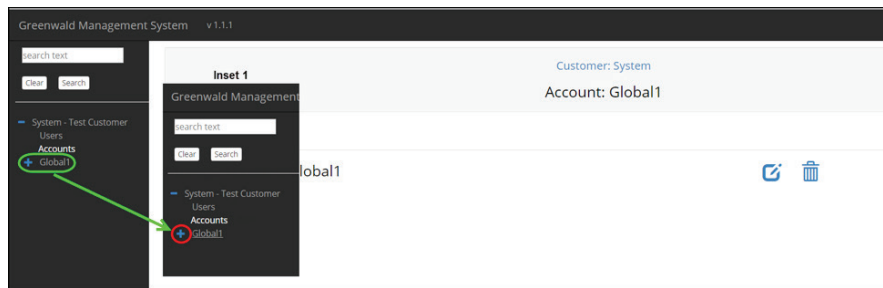


- › Fill in location fields and then click save. Location name is the only required field.

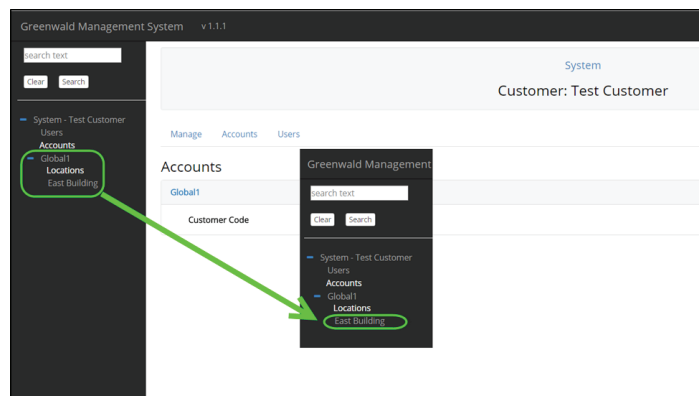
A screenshot of the 'Create Location' form. The form has a title bar 'Create Location' with a close button. Below the title bar, there is a section 'Location' with several input fields: 'Name', 'Location Code', 'Address', 'City', 'State', 'Zip Code', and 'Phone'. At the bottom right, there are 'Close' and 'Save' buttons.

5) ADD OR MODIFY A KIOSK

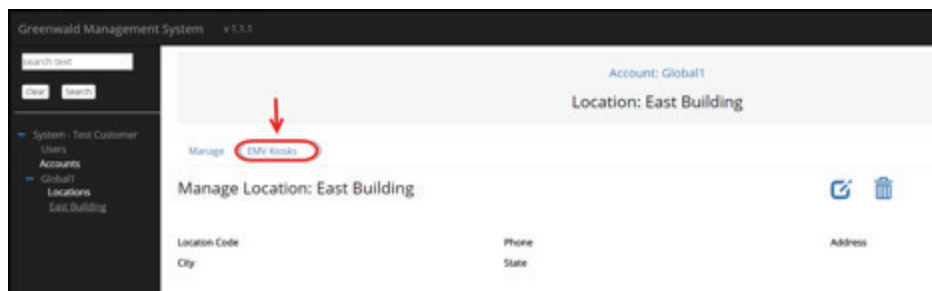
- Click the Account where a Kiosk will be added or modified. Click **+** to expand your selection.



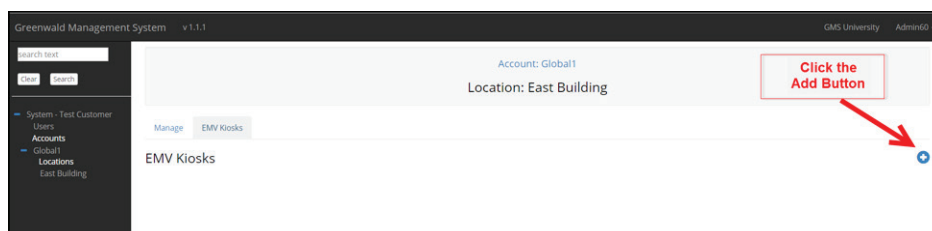
- Click the Location where a Kiosk will be added or modified.



- Select EMV Kiosk.



- Add an EMV Kiosk by clicking the Add button.



➤ Fill in fields. Refer to descriptions below.

The screenshot shows a web-based configuration interface for an EMV Kiosk. The title bar reads 'Update EMV Kiosk: Kiosk 1'. The form is organized into columns and sections. The 'Machine' section includes fields for Name, Flash Net ID, Location Checking, Location Clustering, Terminal ID, and Add Value Type. The 'Card' section includes Card Cost, Deposit, Initial Value, Min Value, Max Value, and Dispensed Value. The 'Bonus Level Awards' and 'Bonus Level Adds' sections each have four rows for Level 1 through Level 4, with Amount and Add fields. The 'Welcome Screen' section includes an Enabled checkbox, Image File Name, and Timeout. The 'Payment Device' section includes a Payment Device dropdown. The 'Add Value - Buttons' section includes three rows for Button 1, Button 2, and Button 3. The 'Culture' and 'Currency' sections are at the bottom. At the bottom right are 'Close' and 'Save' buttons.

Machine

- **Name (Required Field):** Enter a unique name for the Kiosk being created.
- **Flash Net ID (Required Field):** Found on the mini-computer inside the EMV Kiosk, i.e. _GL-EMV-100001. (Note: Every character, including the underscore needs to be entered.)
- **Location Checking:** If selected, only users with correct Location ID's can add value to their card or use machines at that specific location. A location is a grouping of machines within a physical room or set of rooms where all of the machines and cards may only operate machines within their location.
- **Location Clustering:** The clustering feature allows for more advanced location restrictions. This feature was designed to address the needs of those administering large facilities. It allows end-users to purchase cards from a central location, yet limits their use of laundry machines to a single location
- **Add Value Type:** Select Button, Keypad, or Washes.

Add Value Buttons

- If using Buttons, enter the value options for up to 8 buttons.

Card

- **Card Cost:** This is the cost of a new card. The customer will be charged this amount plus card deposit. This does not affect the initial value. It is displayed as a card cost.
- **Deposit:** This is the deposit amount for a card. The customer will be charged this amount plus the card cost. This does not affect the initial value. It is displayed as a card deposit.

- **Initial Value:** When this option is selected the first time a User Card with this option enabled the user will be charged a fee to offset the cost of the card.
- **Min Value - Max Value:** Sets the minimum and maximum amount of value that can be set to the card.
- **Dispensed Value:** If pre-valued cards are loaded in the dispenser this is the value of the card. This is included in the charge to the customer.

Welcome Screen

- **Enabled:** Leave unchecked.
- **Image Screen:** Leave as default.
- **Timeout:** Select desired timeout.

Culture

- **Currency:** Select currency.
- **Language 1:** Select desired primary language
- **Language 2:** Leave as default

Bonus Level Awards & Bonus Level Adds

- **Optional Feature:** Enter as desired or leave blank

Payment Device

- **Payment Device:** Select credit card processor from drop-down menu.

Payment Device ID

- **Auth Key and Register ID:** Enter the Auth Key and Registration ID as exactly provided from your credit card processor. We recommend cutting and pasting directly from the processor's email, making sure to avoid adding any extra spaces. **Note: the Register ID field is location specific.**

DBA: Greenwald Industries	
Location Name: 212 Middlesex Ave	
MID:	236598045231
UPS Tracking #:	N/A
TPN:	562784390
Device S/N:	N/A
Auth Key:	hzR7Jqy5c
Register ID:	4379

➤ Click **Save**

➤ Under **Actions** Click **Send Configuration**

Actions

Send Configuration

Ping Kiosk

Request System Restart

Request Restart NeoRouter

➤ Select **Event Log** and look for message below to confirm that the command was sent and completed (*may take a few minutes*).

Manage Transactions Event Log Reports

Event Log

Timestamp	Type	Source	Category	Details
8/23/2017 2:06:38 PM	LogMessage	EMVKioskAgent	Info	Received Apply Config Success Response. Update Complete

➤ Select **Manage** and under **Actions** Click **Request System Restart**

Actions

Send Configuration

Ping Kiosk

Request System Restart

Request Restart NeoRouter

Action Definitions

- **Send Configuration:** Sends changes made in GMS to the PC in the kiosk. Changes will not be applied unless configuration is sent.
- **Ping Kiosk:** Verifies kiosk is online and active.
- **Request System Kiosk:** Restarts the PC in the kiosk. After a configuration is applied the system should be restarted.
- **Request Restart NeoRouter:** Used by Greenwald for diagnostic purposes..



860-526-0800 | greenwaldindustries.com